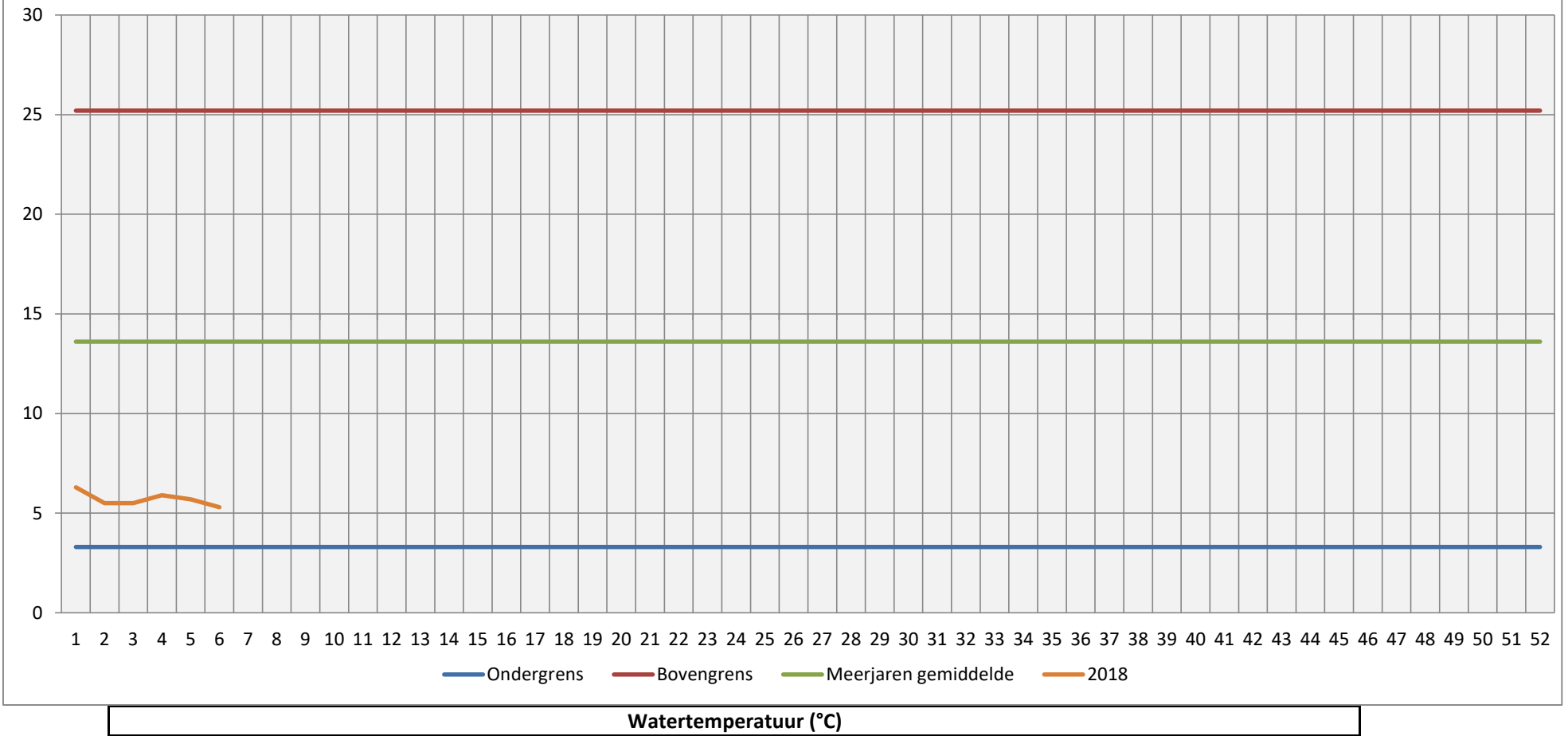
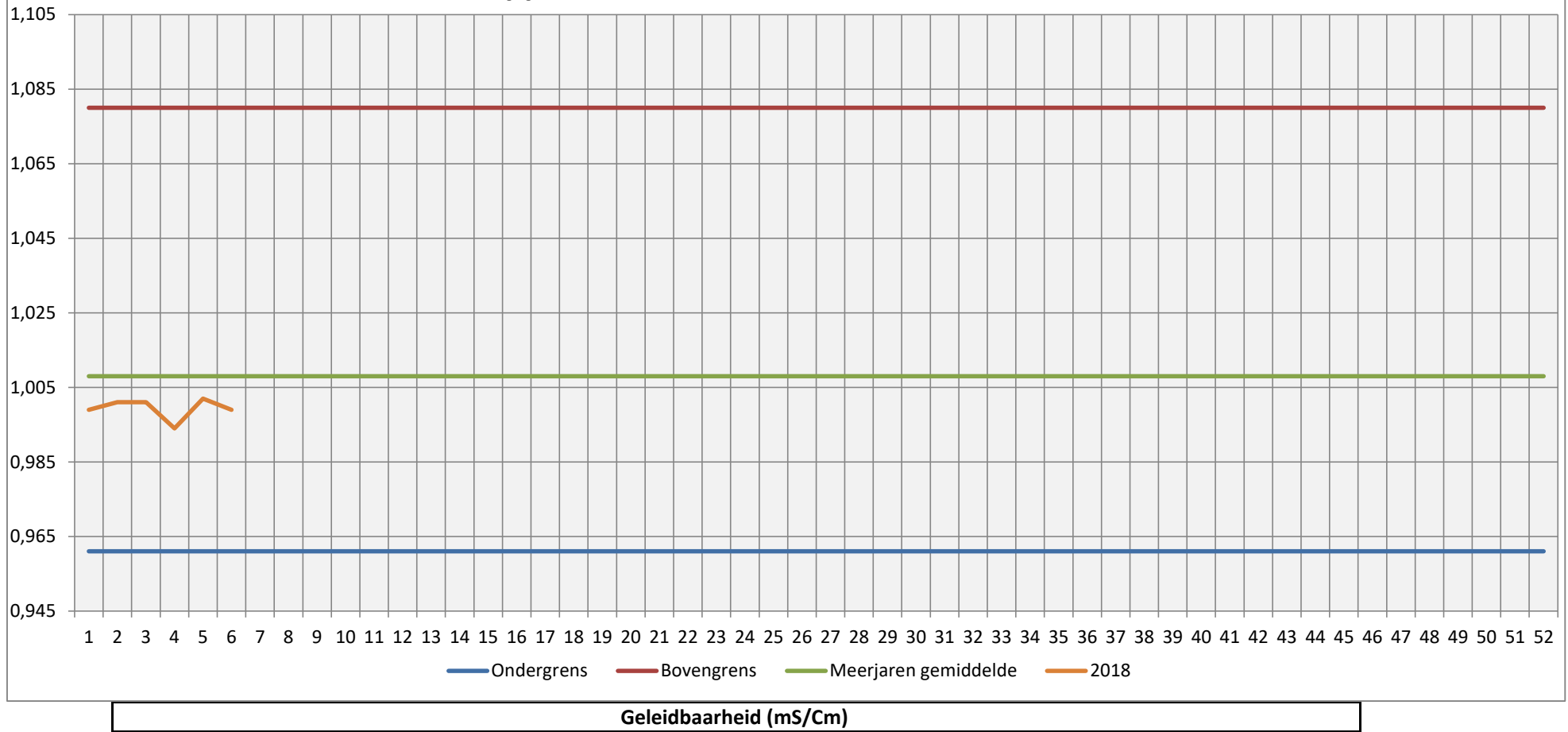


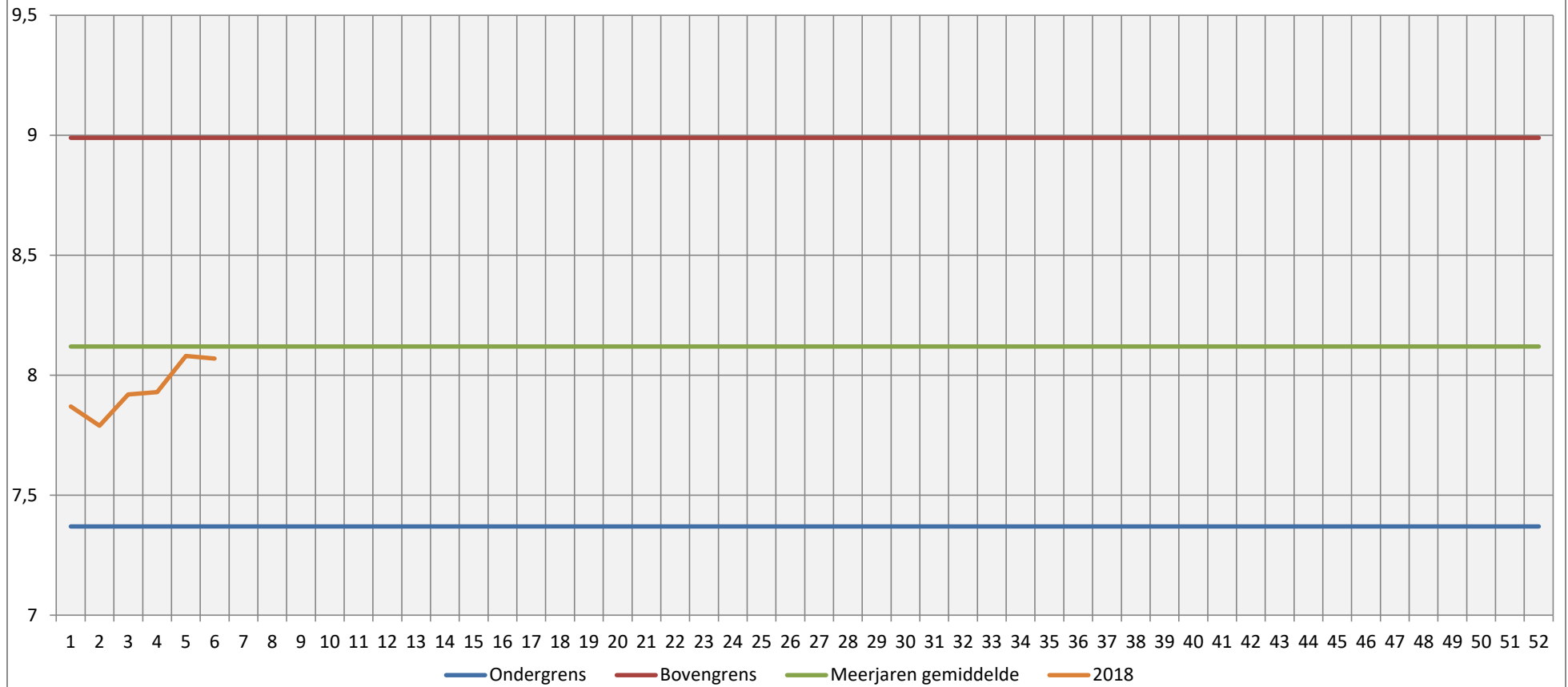
Grafiek Oppervlaktewater Haarlemmermeersebos



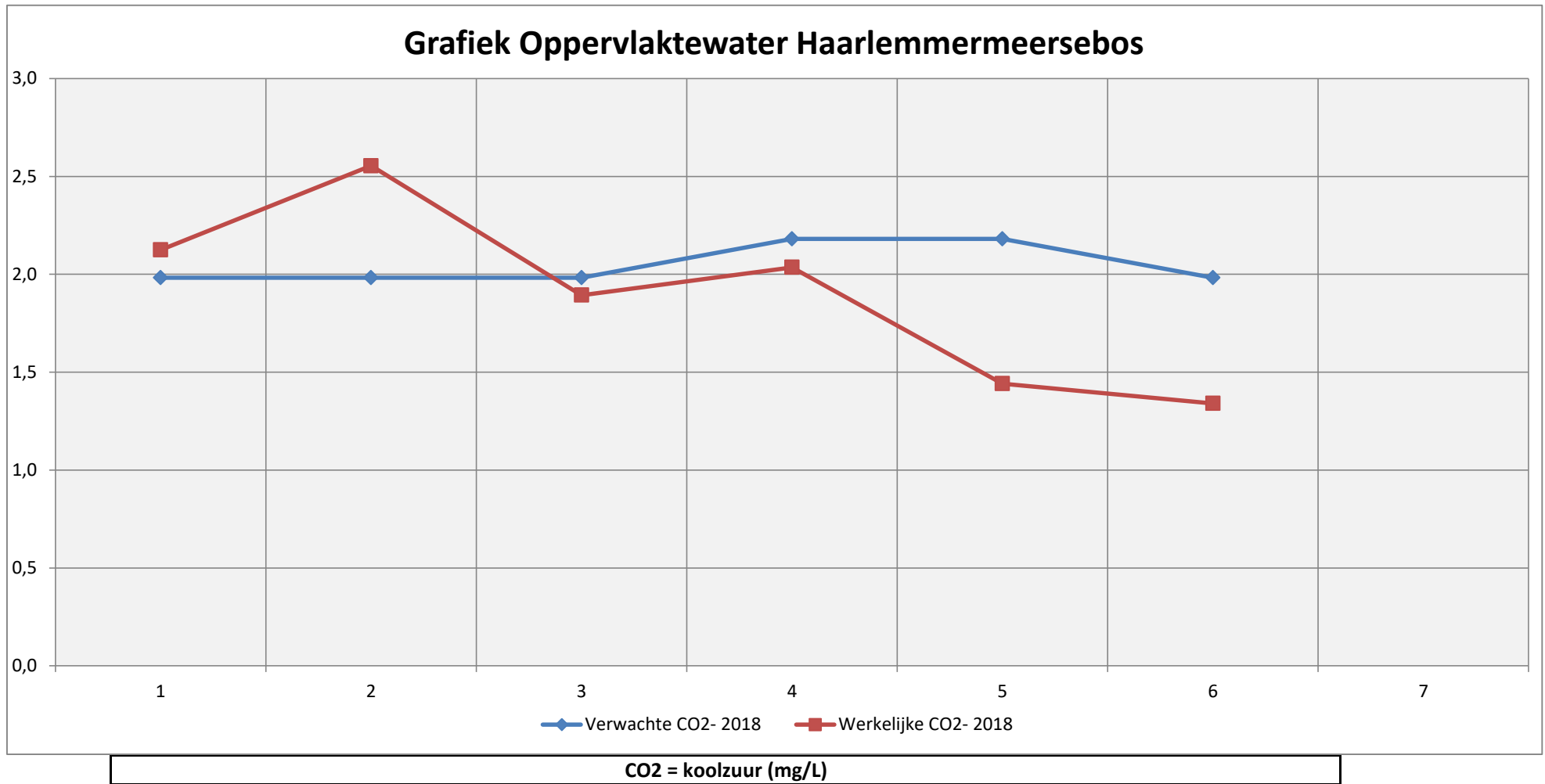
Grafiek Oppervlaktewater Haarlemmermeersebos



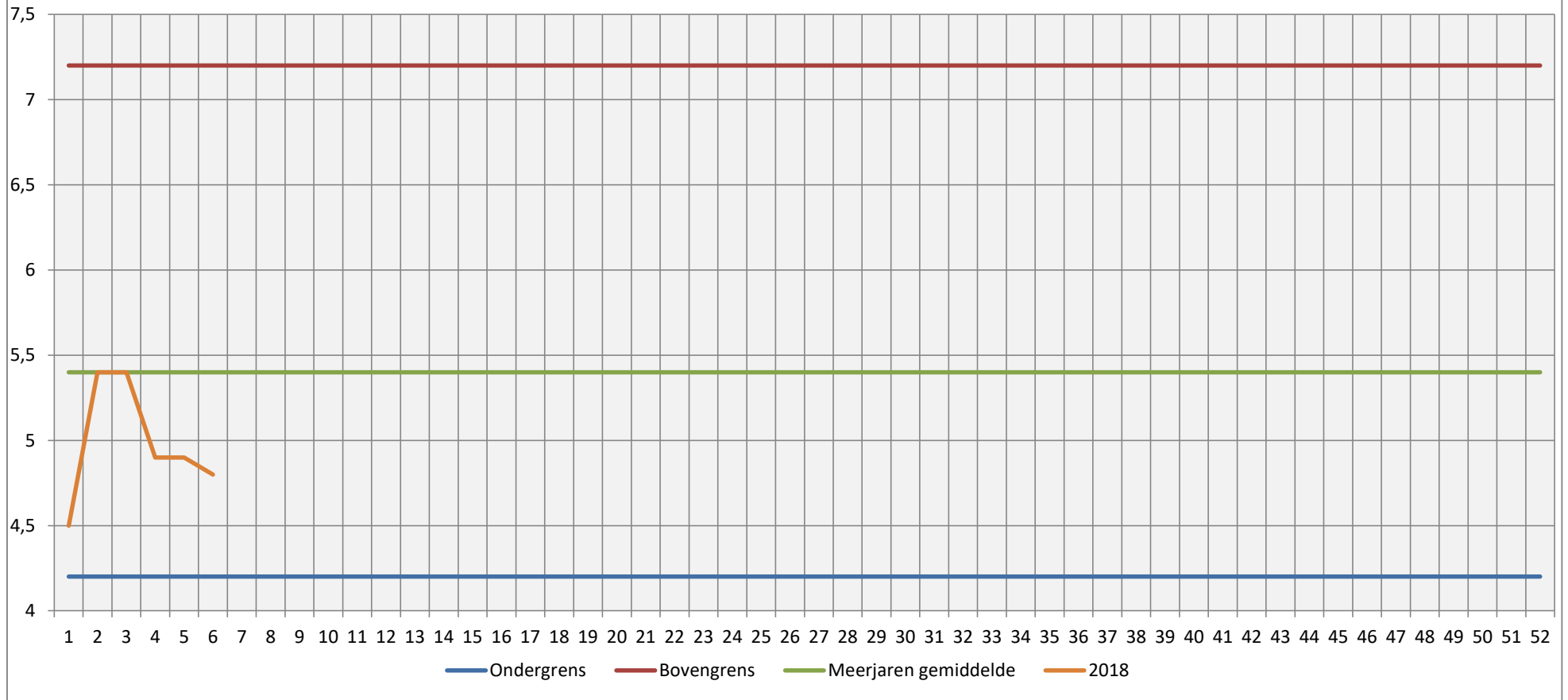
Grafiek Oppervlaktewater Haarlemmermeersebos



PH = Zuur / Basis

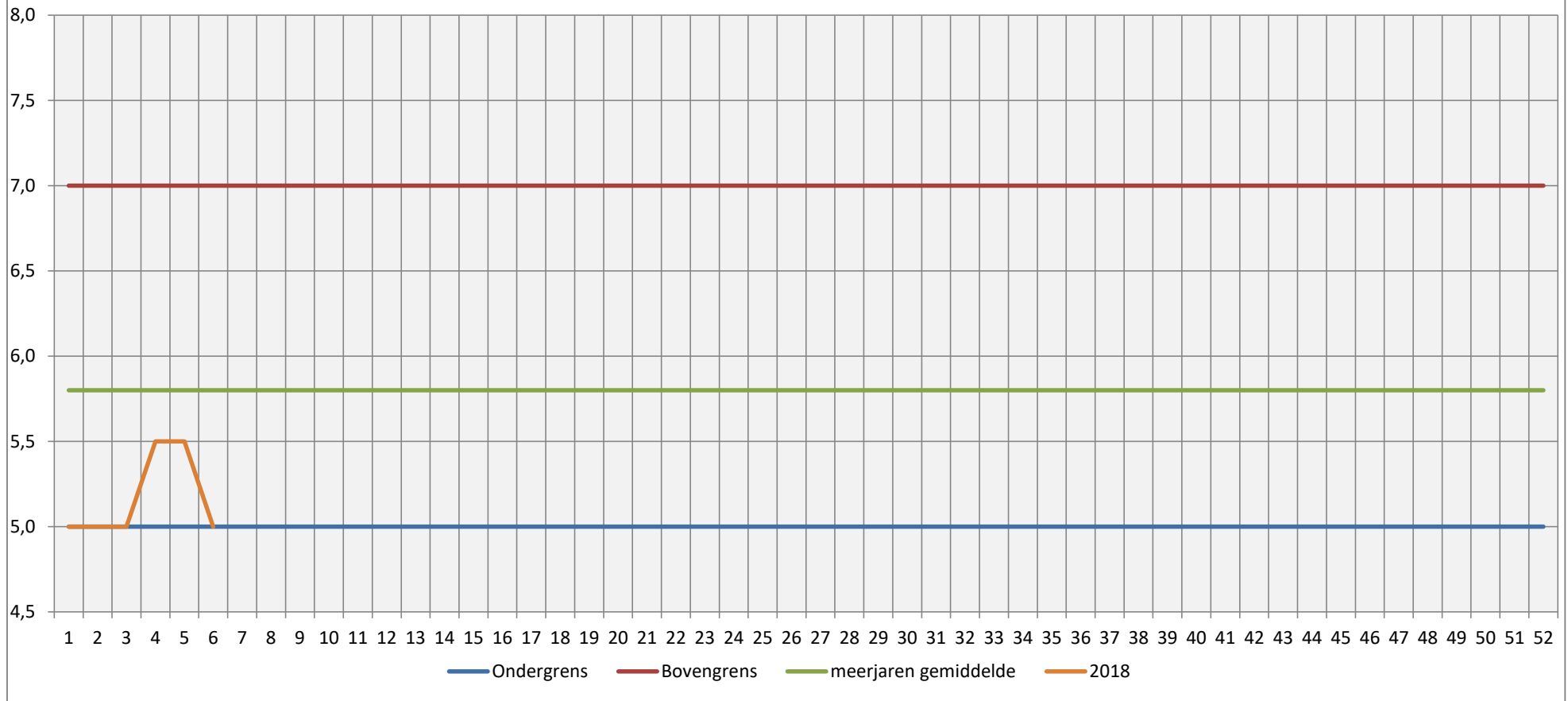


Grafiek Oppervlaktewater Haarlemmermeersebos



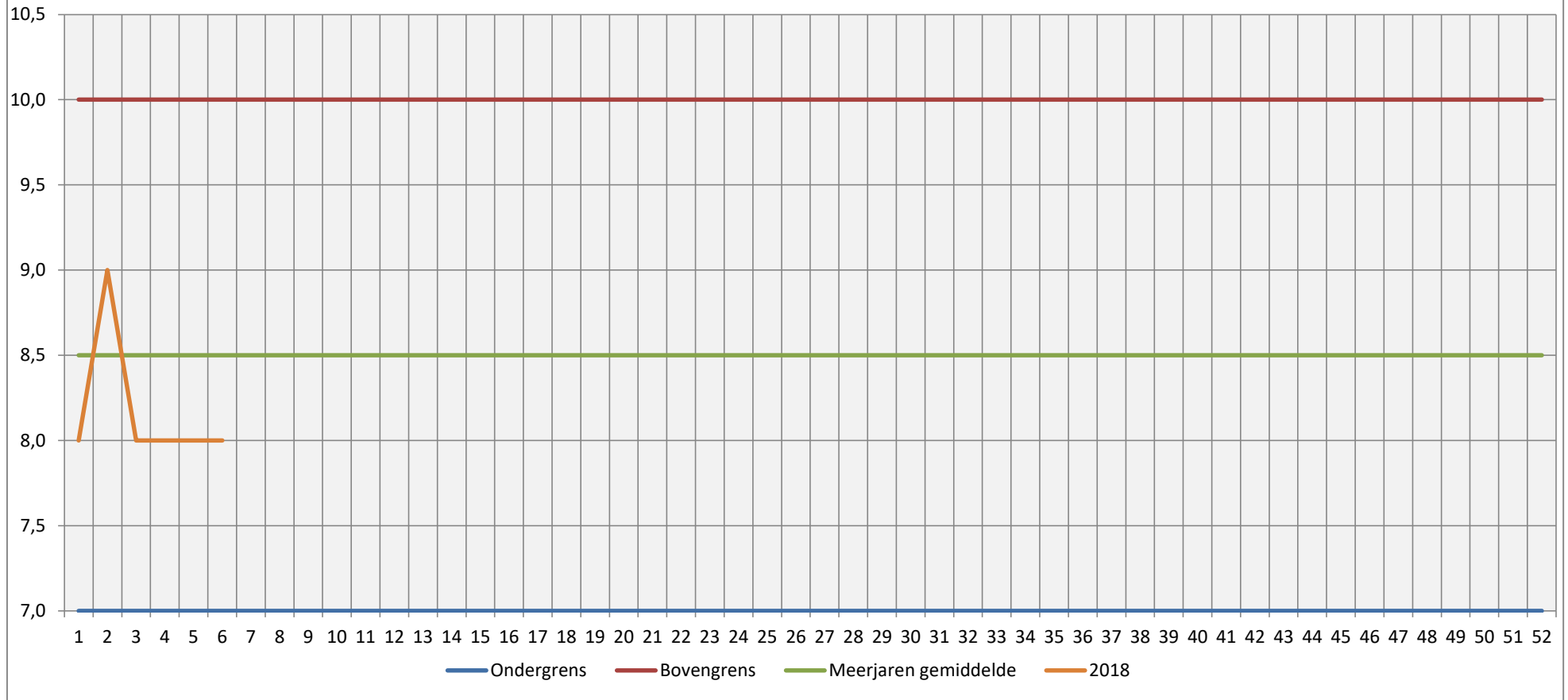
DO = opgeloste zuurstof (mg/L)

Grafiek Oppervlaktewater Haarlemmermeersebos



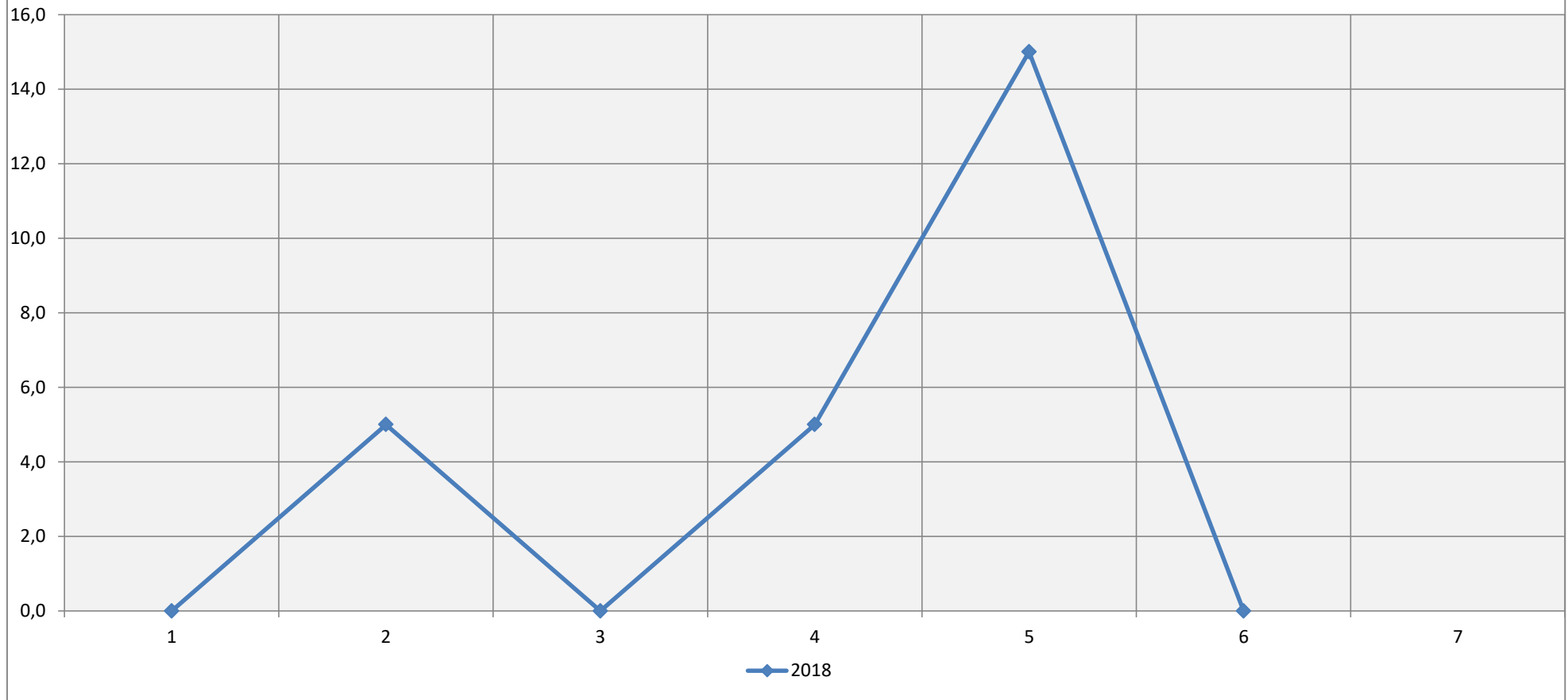
KH = Carbonaathardheid (°dH)

Grafiek Oppervlaktewater Haarlemmermeersebos



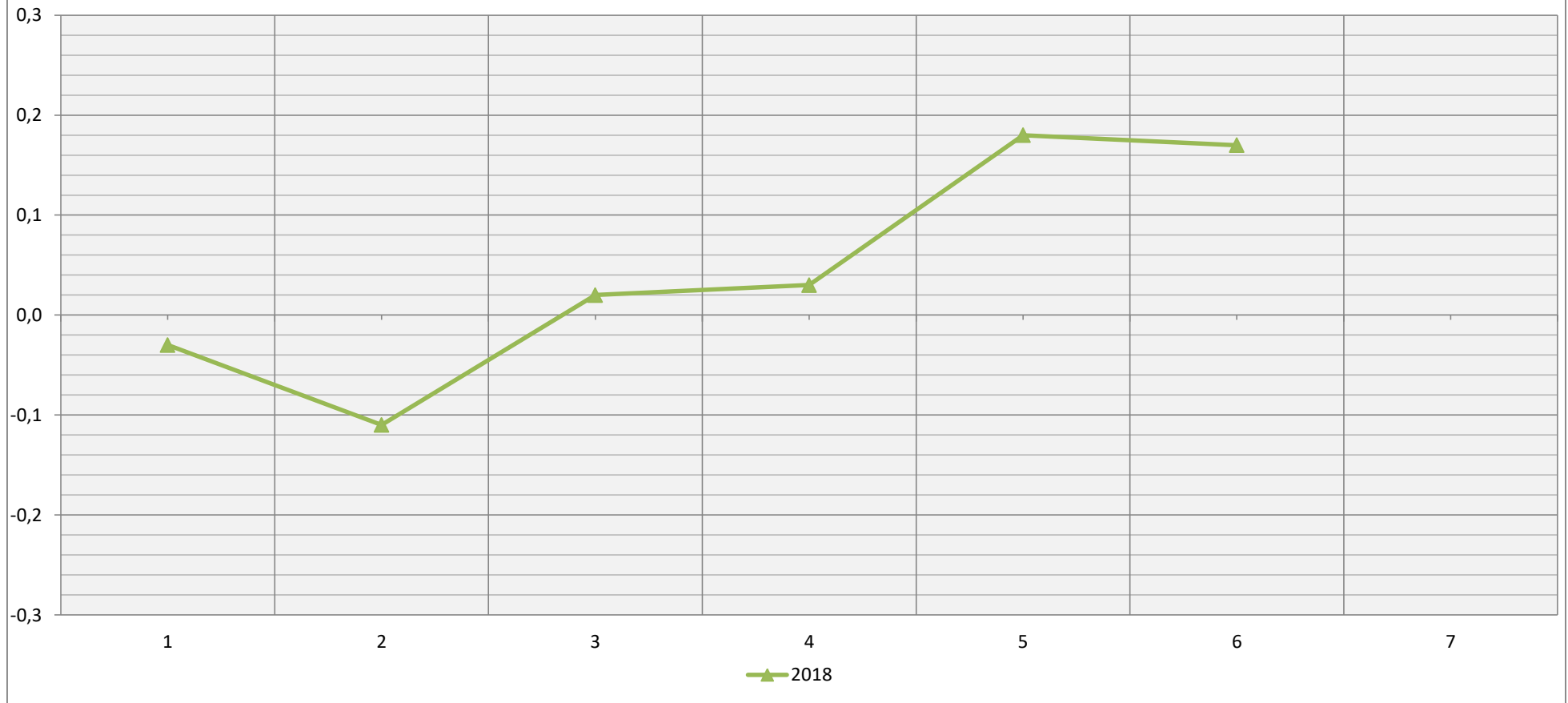
GH = Totale hardheid (°dH)

Grafiek Oppervlaktewater Haarlemmermeersebos



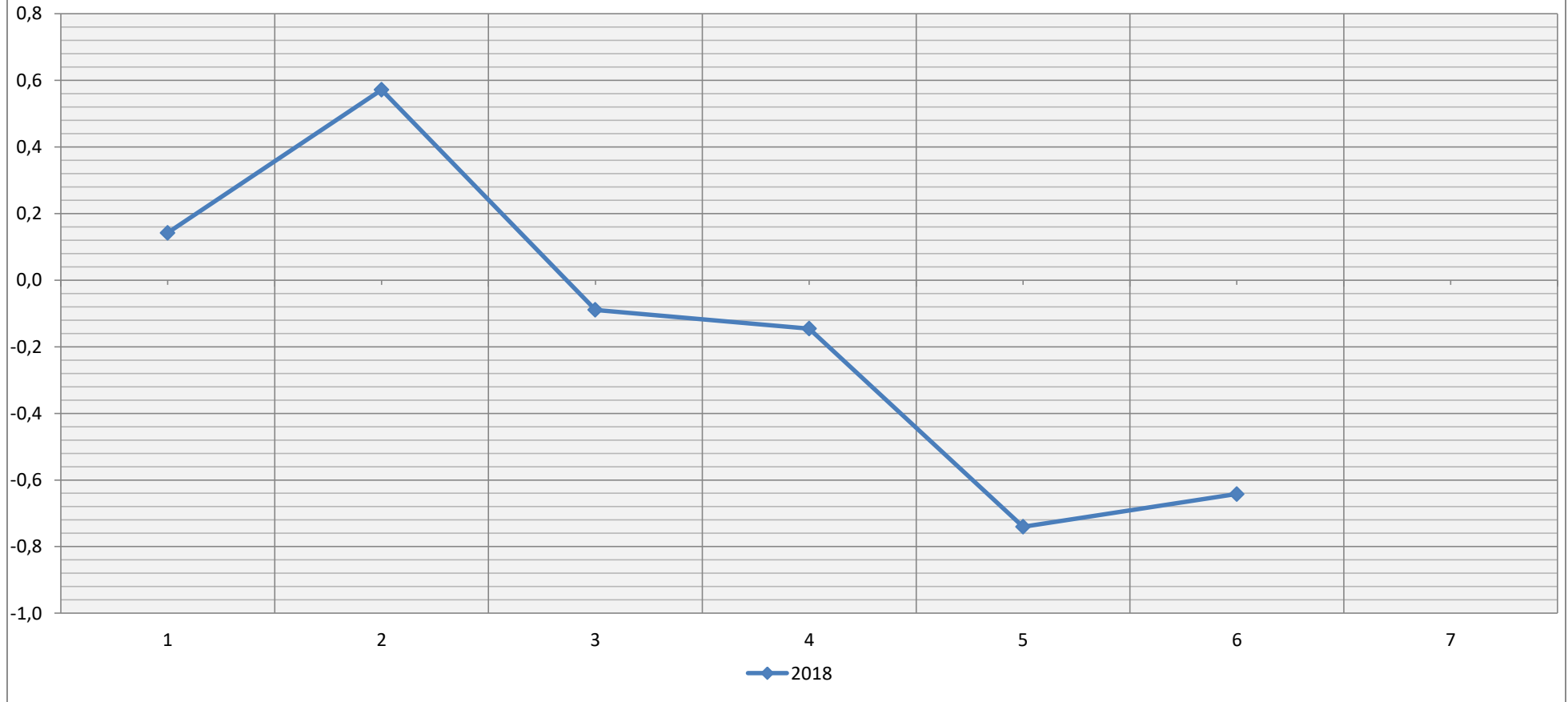
Helderheid oppervlakte water. (Ref: 0 = gedistilleerd water) eenheid PCU (Platium Cobalt Units)

Grafiek Oppervlaktewater Haarlemmermeersebos



PH =Zuur / Basis <> dan de norm van 7,9 PH

Grafiek Oppervlaktewater Haarlemmermeersebos



CO2- balans <> dan het verwachte CO2 gehalte