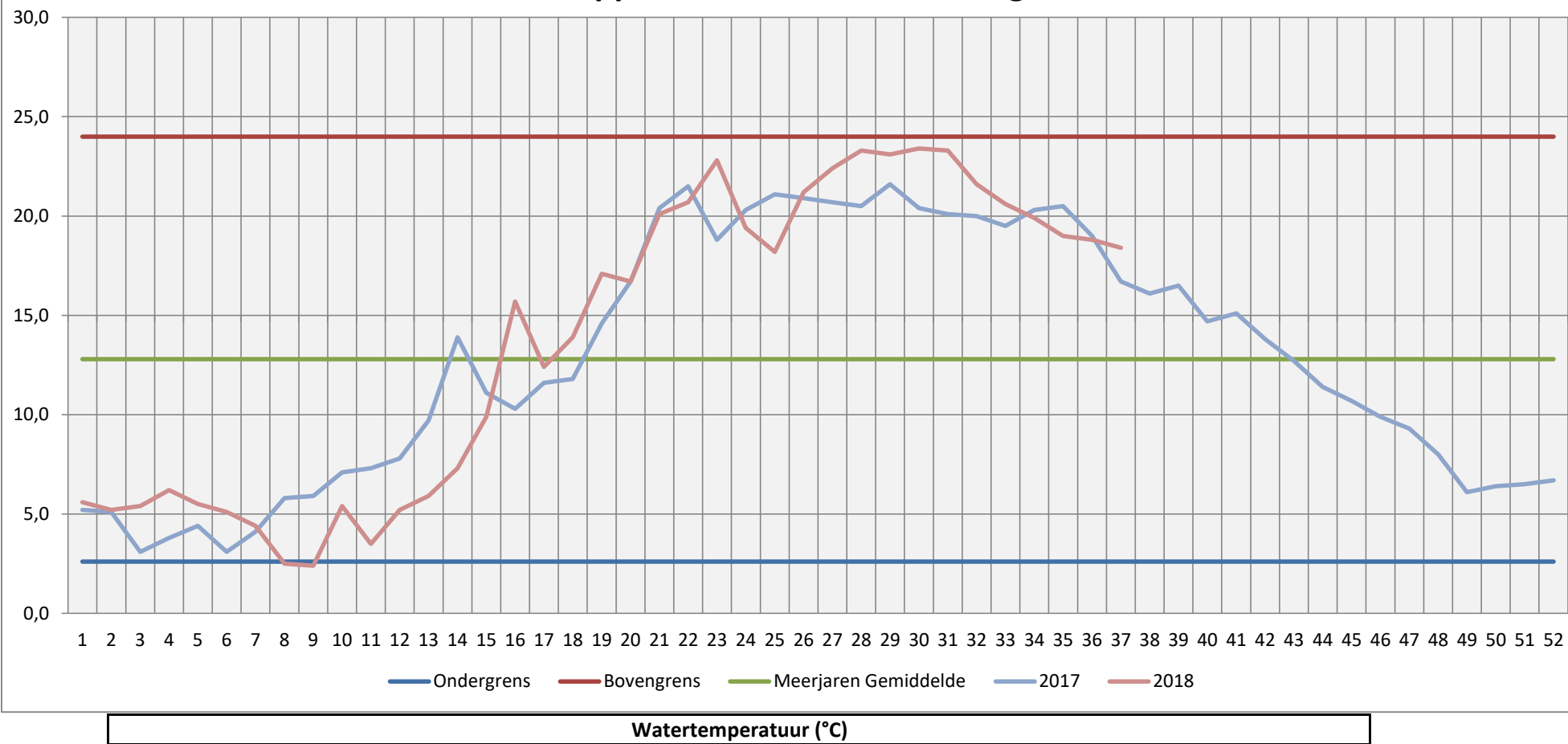
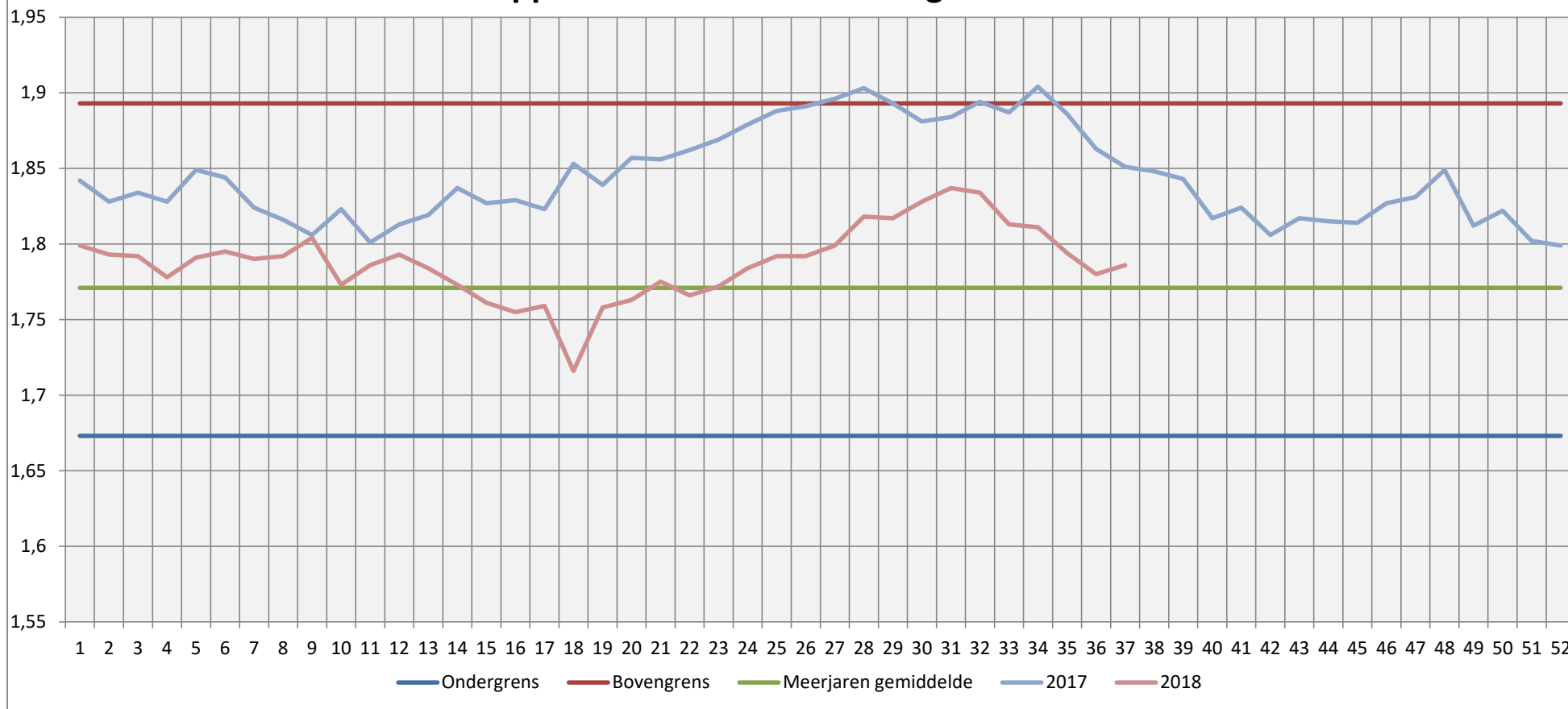


Grafiek Oppervlaktewater Toolenburger Plas

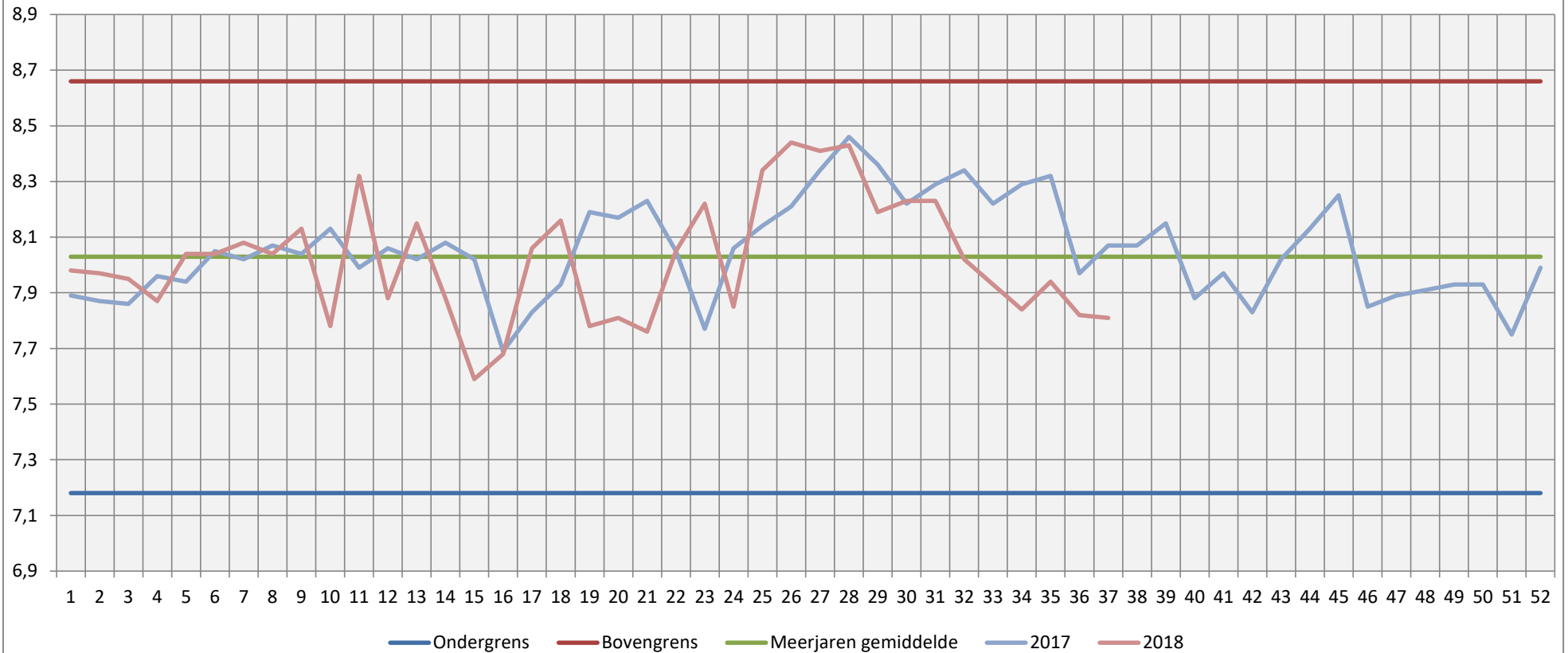


Grafiek Oppervlaktewater Toolenburger Plas



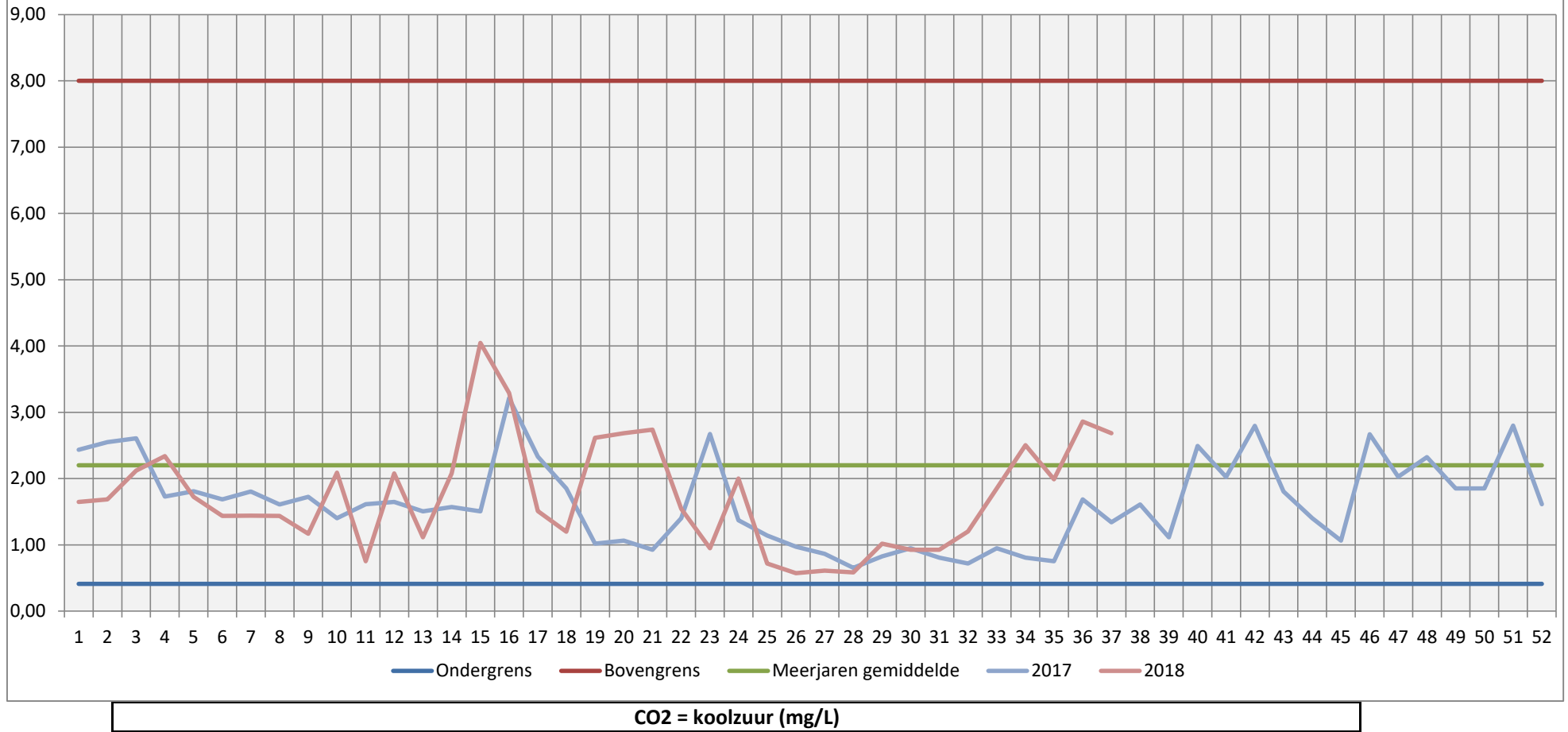
Geleidbaarheid (mS/Cm)

Grafiek Oppervlaktewater Toolenburger Plas

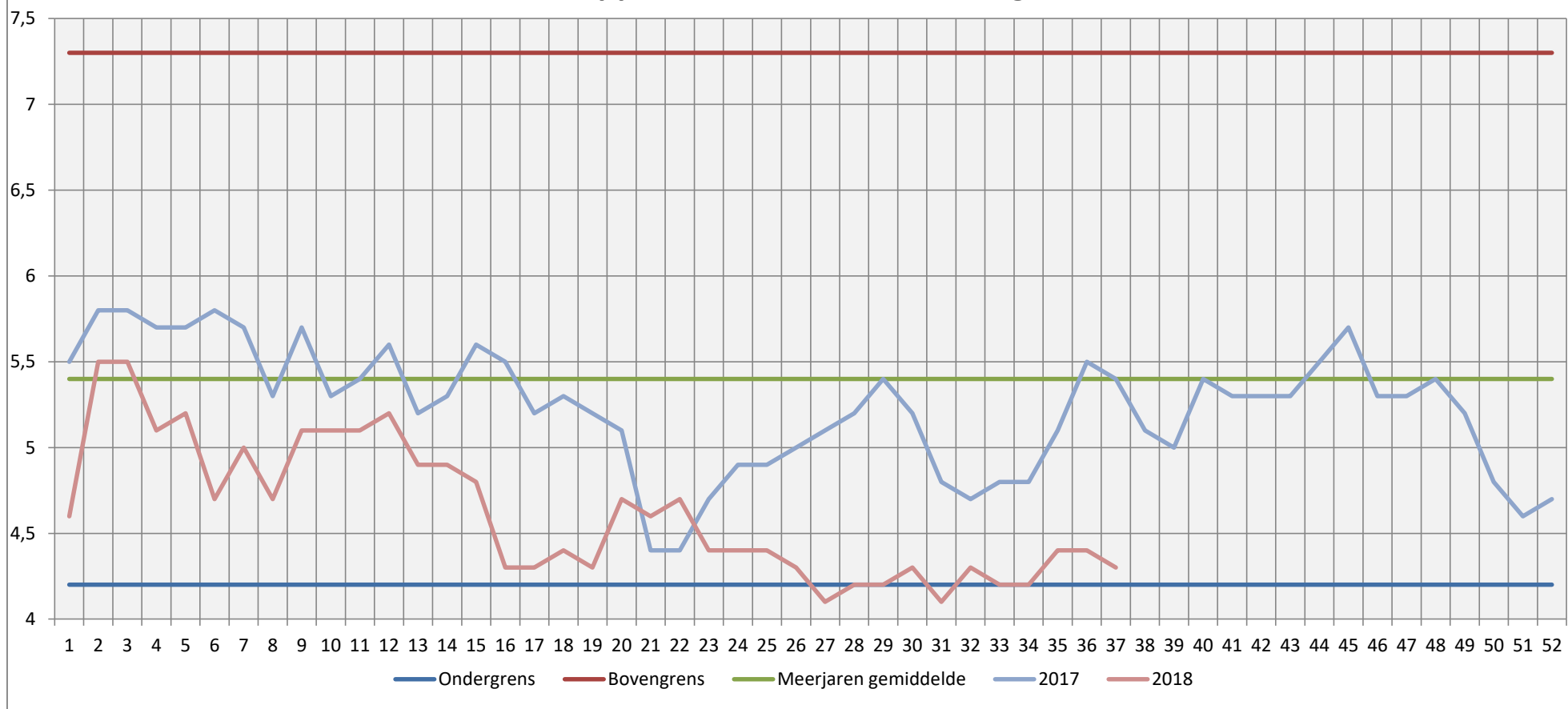


PH = Zuur / Basis

Grafiek Oppervlaktewater Toolenburger Plas

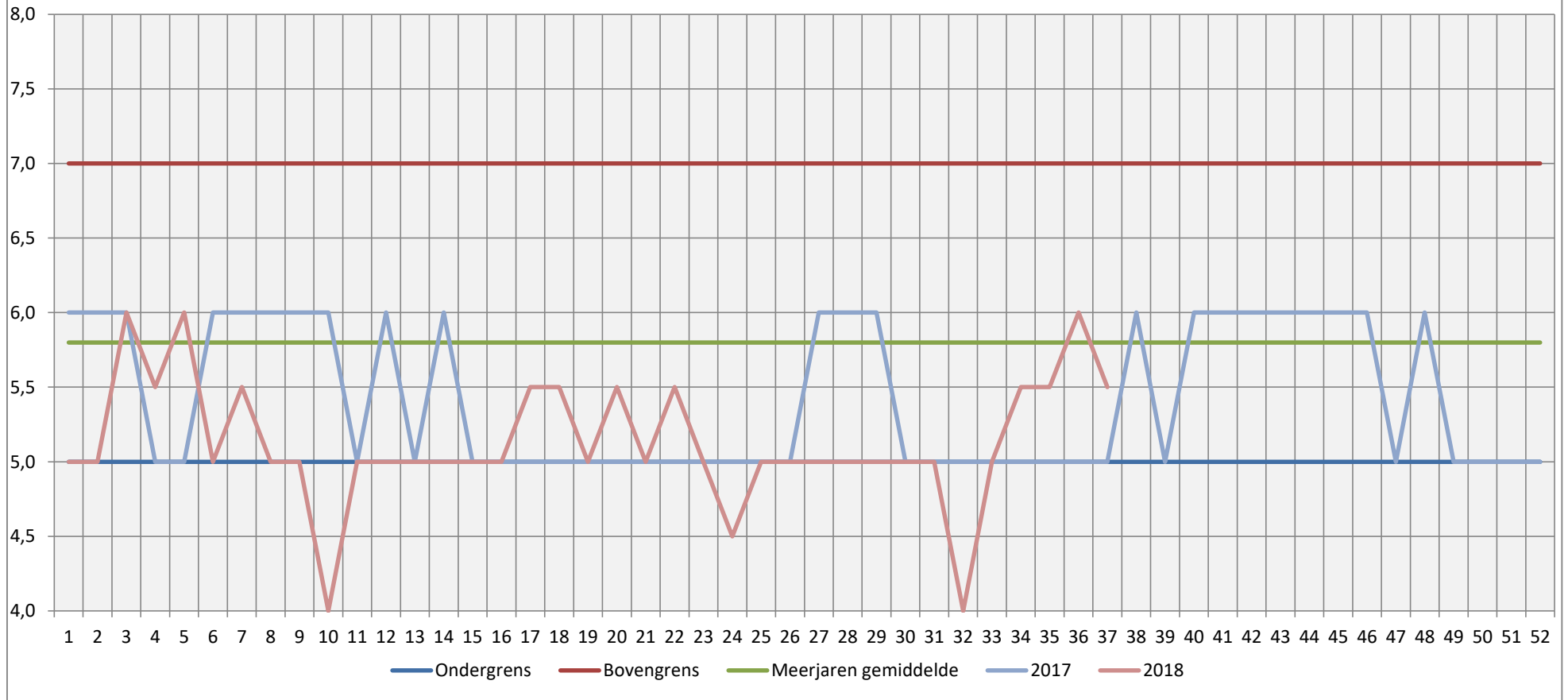


Grafiek Oppervlaktewater Toolenburger Plas



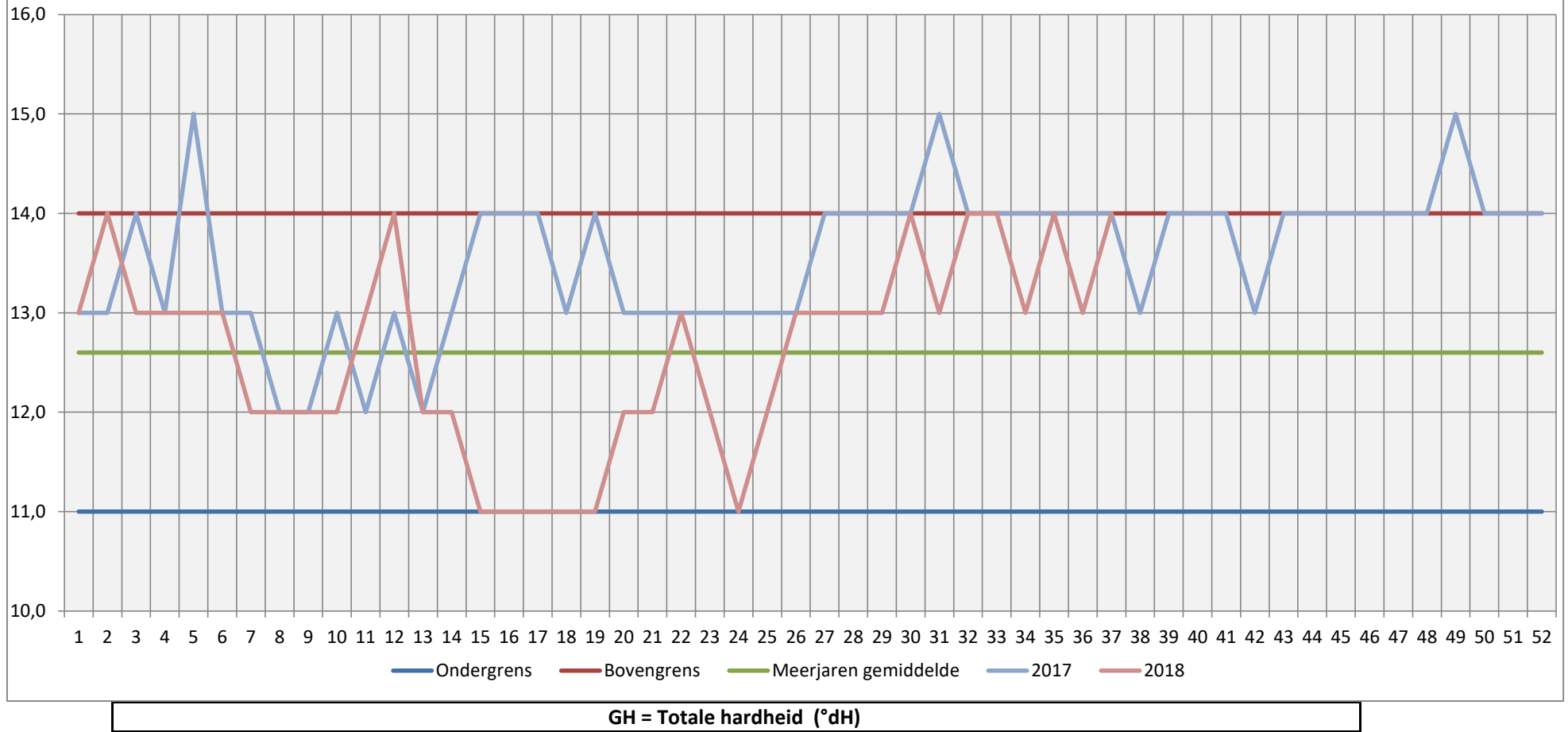
DO = opgeloste zuurstof (mg/L)

Grafiek Oppervlaktewater Toolenburger Plas

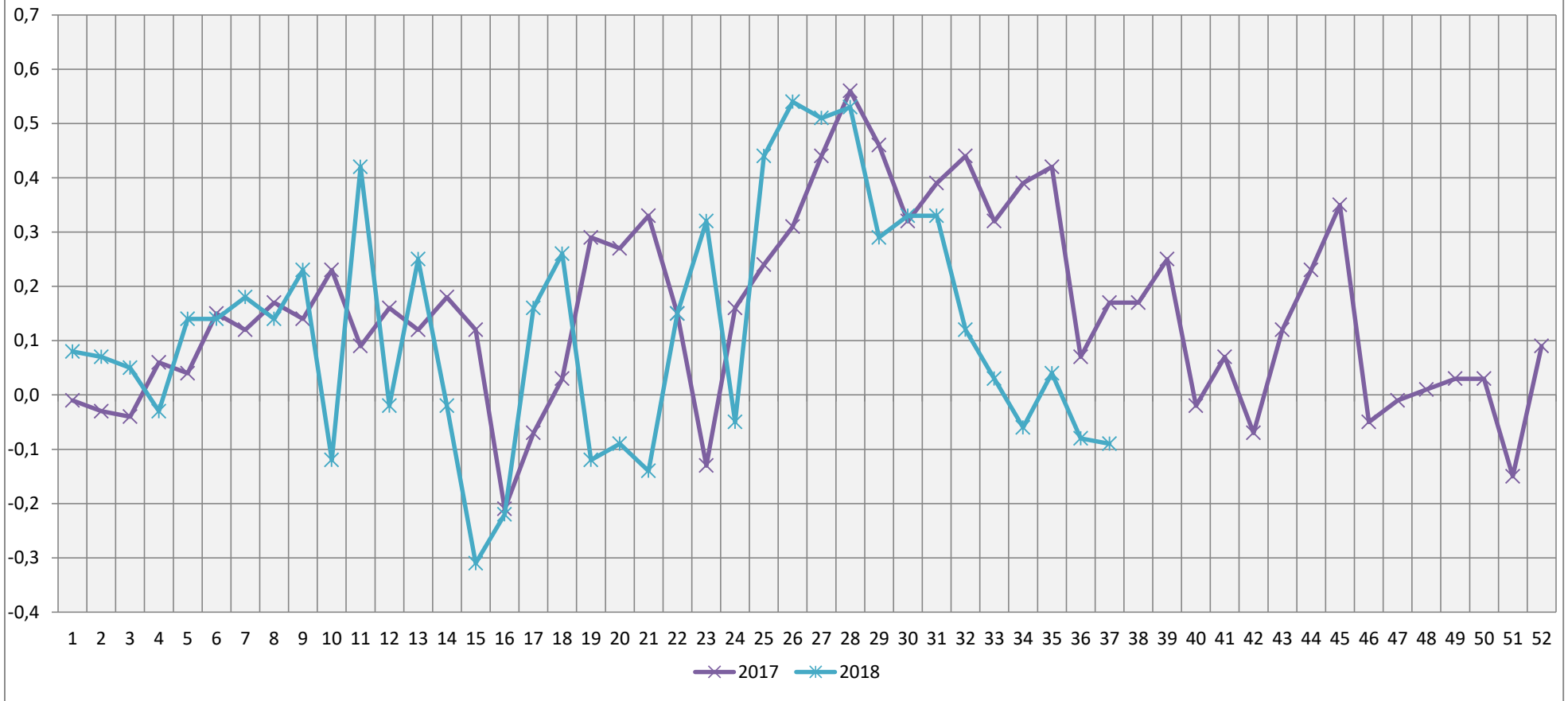


KH = Carbonaathardheid (°dH)

Grafiek Oppervlaktewater Toolenburger Plas



Grafiek Oppervlaktewater Toolenburger Plas



PH =Zuur / Basis ± van de norm van 7,9 PH